

AFP Antibody
Purified Mouse Monoclonal Antibody
Catalog # AO1330a**Specification**

AFP Antibody - Product Information

Application	WB, E
Primary Accession	P02771
Reactivity	Human
Host	Mouse
Clonality	Monoclonal
Isotype	IgG2b
Calculated MW	69kDa KDa

Description

AFP (alpha-fetoprotein), a major plasma protein produced by the yolk sac and the liver during fetal life. Alpha-fetoprotein expression in adults is often associated with hepatoma or teratoma. However, hereditary persistence of alpha-fetoprotein may also be found in individuals with no obvious pathology. The protein is thought to be the fetal counterpart of serum albumin, and the alpha-fetoprotein and albumin genes are present in tandem in the same transcriptional orientation on chromosome 4. Alpha-fetoprotein is found in monomeric as well as dimeric and trimeric forms, and binds copper, nickel, fatty acids and bilirubin. The level of alpha-fetoprotein in amniotic fluid is used to measure renal loss of protein to screen for spina bifida and anencephaly.

Immunogen

Purified recombinant fragment of human AFP expressed in E. Coli.

Formulation

Antibody are purified by protein G affinity chromatography.
Liquid in PBS containing 50% glycerol and 0.03% sodium azide.

AFP Antibody - Additional Information

Gene ID 174

Other Names

Alpha-fetoprotein, Alpha-1-fetoprotein, Alpha-fetoglobulin, AFP, HPAFP

Dilution

WB~~1/500 - 1/2000

E~~N/A

Storage

Maintain refrigerated at 2-8°C for up to 6 months. For long term storage store at -20°C in small aliquots to prevent freeze-thaw cycles.

Precautions

AFP Antibody is for research use only and not for use in diagnostic or therapeutic procedures.

AFP Antibody - Protein Information

Name AFP

Synonyms HPAFP

Function

Binds copper, nickel, and fatty acids as well as, and bilirubin less well than, serum albumin. Only a small percentage (less than 2%) of the human AFP shows estrogen-binding properties.

Cellular Location

Secreted.

Tissue Location

Plasma. Synthesized by the fetal liver and yolk sac

AFP Antibody - Protocols

Provided below are standard protocols that you may find useful for product applications.

- [Western Blot](#)
- [Blocking Peptides](#)
- [Dot Blot](#)
- [Immunohistochemistry](#)
- [Immunofluorescence](#)
- [Immunoprecipitation](#)
- [Flow Cytometry](#)
- [Cell Culture](#)

AFP Antibody - Images

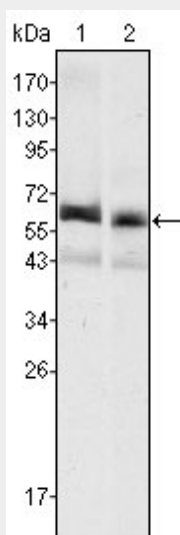


Figure 1: Western blot analysis using AFP mouse mAb against HepG2 (1) and SMMC-7721 (2) cell lysate.

AFP Antibody - References

1. Proc Natl Acad Sci U S A. 1985 Nov;82(21):7160-4.
2. Pediatr Hematol Oncol. 2001

Dec;18(8):509-18. 3. Tumour Biol. 2002 Jul-Aug;23(4):202-11.